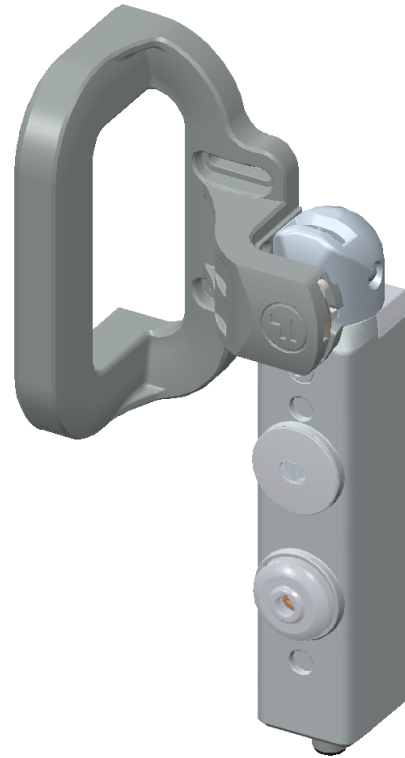
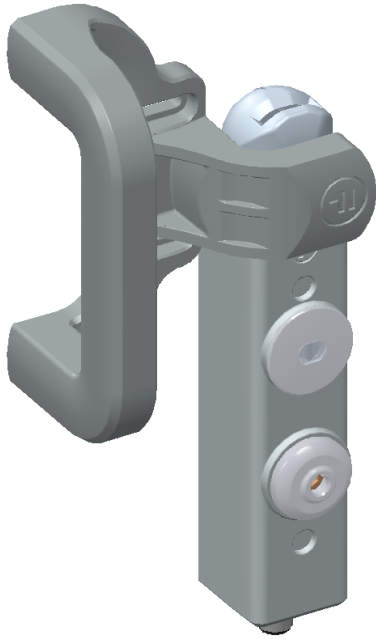


Datasheet for THHSMDUQM



Breakdown List

Item number: ITM-00159885

Part	Description
THH	Head module including hinged actuator
TSMDU	Power to Unlock - head & solenoid safety in serie
TQM	12 Pin M12 QD Safety & Control

Datasheet for THHSMDUQM

Technical Specification

tGard offers "a customised safety solution, as standard" and is defined by a range of tGard elements, including selector switches, safety switches(solenoid and non solenoid), personnel keys(safety keys), emergency release, push buttons, estops, indicator lamps and a choice of operating handles for both hinged and sliding guard doors. These elements are simply selected and then assembled into a robust housing, suitable for mounting onto machine guarding, providing the user with an exact configuration specific to the application.

tGard is quick and easy to install and can be mounted directly onto a flat surface, doors or extruded aluminium profiles without the need for mounting plates or brackets. It is IP65 as standard and has been designed to be fully compliant with the new machinery safety standards.

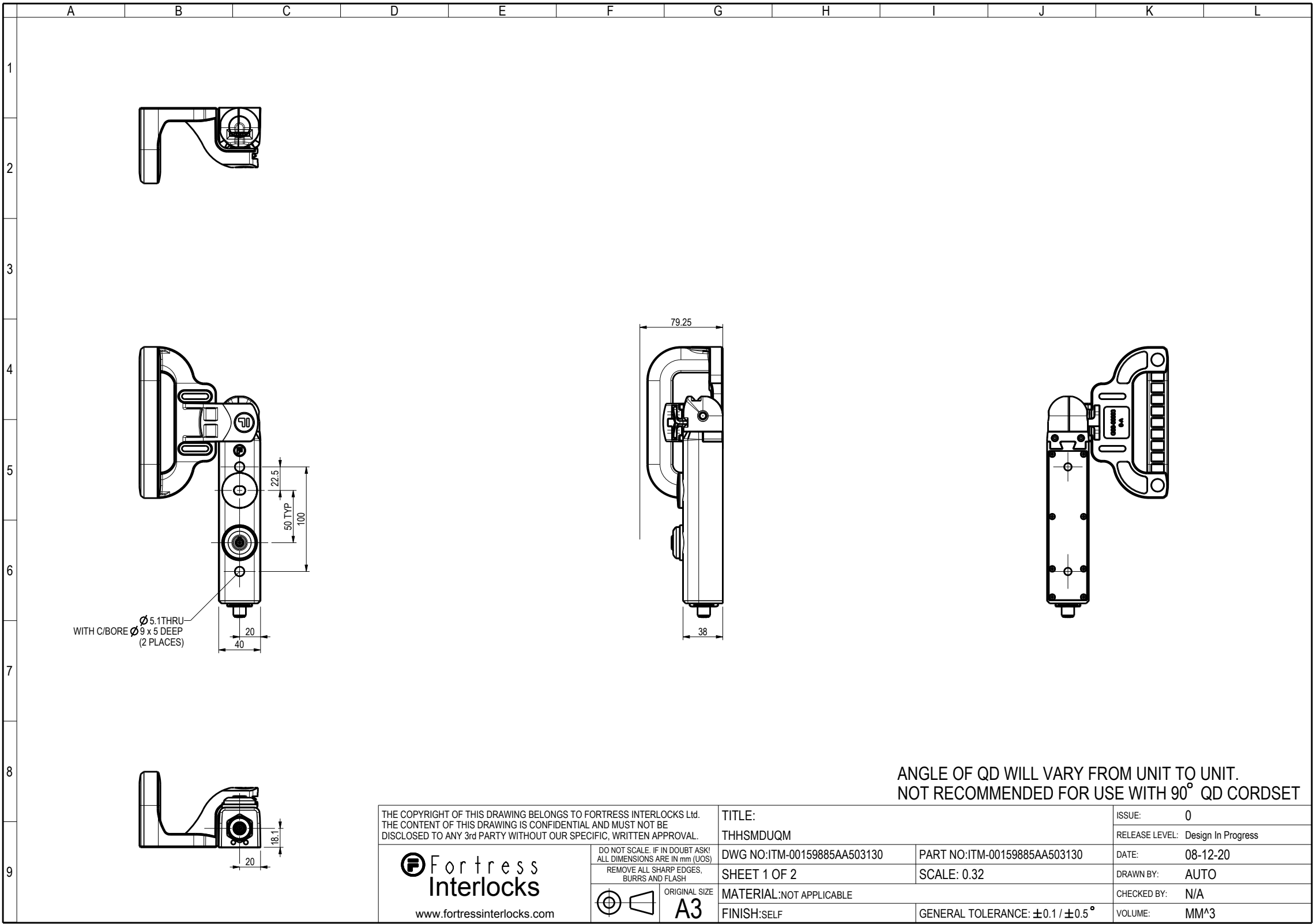
Technical Specification

Housing Materials	THH	Painted die cast zinc alloy
	TSMDU	Painted die cast aluminium
Contact Material	TSMDU	Silver
Colour	THH	Dark Grey
	TSMDU	
Ambient Temperature	0°C to 40°C (32°F to 104°F)	
Environment	THH	Indoor
	TSMDU	
Ingress Protection	THH	IP65****
	TSMDU	
Retention Force	THH	2500N
	TSMDU	2000nm(locked)
Operating Force	THH	5N to 10N
Mechanical Life	THH	1,000,000 Operations
	TSMDU	
Maximum Frequency of Operations	THH	1 per second
	TSMDU	
Solenoid Rating	TSMDU	350mA max @ 24VDC
Safety Switch Type	TSMDU	DC13: Le=0.5A, Ue=24V DC AC15: Le=1A, Ue=24V AC
Monitoring Switches	TSMDU	DC13: Le=0.5A, Ue=24V DC
Min hinged door radius	THH	150mm (using TAH actuator handle)
Electrical Life	TSMDU	1,000,000 Operations

**** IP protection is to the tGard stack that this module attaches to, when correctly fitted according to installation and maintenance instructions.

Datasheet for THHSMDUQM

Full Dimentional Drawing



Datasheet for THHSMDUQM

1

2

3

4

5

6

7

8

9

Item	THHSMDUQM										
------	-----------	--	--	--	--	--	--	--	--	--	--

HEAD	1	2	3	4	5	6	7	8	9	10	Base
THH	SM	DU									QM

	Input	Output	2nd Output	SC1 in	SC2 in	SC1 out	SC2 out	SC3 in	SC4 in	SC3 out	SC4 out	+24V	0V	Earth
TSM	N/A	N/A	N/A	N/A	N/A	*****	*****	-	-	-	-			
TDU	N/A	N/A	N/A	*****	*****	N/A	N/A	-	-	-	-			
	N/A	N/A	N/A	-	-	-	-	-	-	-	-			
	N/A	N/A	N/A	-	-	-	-	-	-	-	-			
	N/A	N/A	N/A	-	-	-	-	-	-	-	-			
	N/A	N/A	N/A	-	-	-	-	-	-	-	-			
	N/A	N/A	N/A	-	-	-	-	-	-	-	-			
	N/A	N/A	N/A	-	-	-	-	-	-	-	-			
	N/A	N/A	N/A	-	-	-	-	-	-	-	-			
TQM												N/A	N/A	N/A

Note: 2nd Output = Anti Clock turn on 3 Pos. Switch

Note: ***** denotes safety element is wired in series to other safety elements

THE COPYRIGHT OF THIS DRAWING BELONGS TO FORTRESS INTERLOCKS Ltd.

THE CONTENT OF THIS DRAWING IS CONFIDENTIAL AND MUST NOT BE DISCLOSED TO ANY 3rd PARTY WITHOUT OUR SPECIFIC, WRITTEN APPROVAL.

Fortress Interlocks

www.fortressinterlocks.com

DO NOT SCALE. IF IN DOUBT ASK!

ALL DIMENSIONS ARE IN mm (UOS)

REMOVE ALL SHARP EDGES, BURRS AND FLASH

ORIGINAL SIZE

A3

TITLE:

WIRING TABLE FOR THHSMDUQM

DWG NO:ITM-00159885AA503130

PART NO:ITM-00159885AA503130

SHEET 2 OF 2

SCALE: 0.32

MATERIAL:NOT APPLICABLE

FINISH:SELF

GENERAL TOLERANCE: ±0.1 / ±0.5°

ISSUE:0

RELEASE LEVEL: Design In Progress

DATE:08-12-20

DRAWN BY:AUTO

CHECKED BY:N/A

VOLUME:0.000 MM^3